



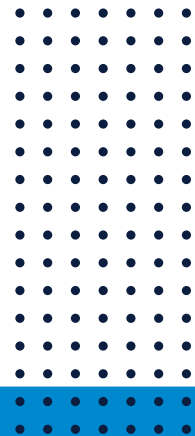
CBAS VPN User Guide



This document outlines how to access and use your new Cloud-Based Advanced Security appliance from US Signal. Learn how to access the web GUI client to view your managed appliance, as well as install and connect remote VPN clients for network access.

Table of Contents

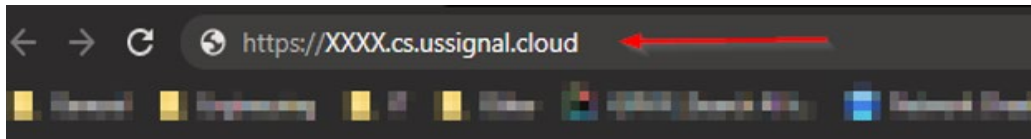
VIEWING THE CBAS APPLIANCE WEB GUI	3
OBTAINING AND INSTALLING THE REMOTE VPN CLIENT SOFTWARE	4
STARTING A REMOTE VPN CONNECTION	5



VIEWING THE CBAS APPLIANCE WEB GUI

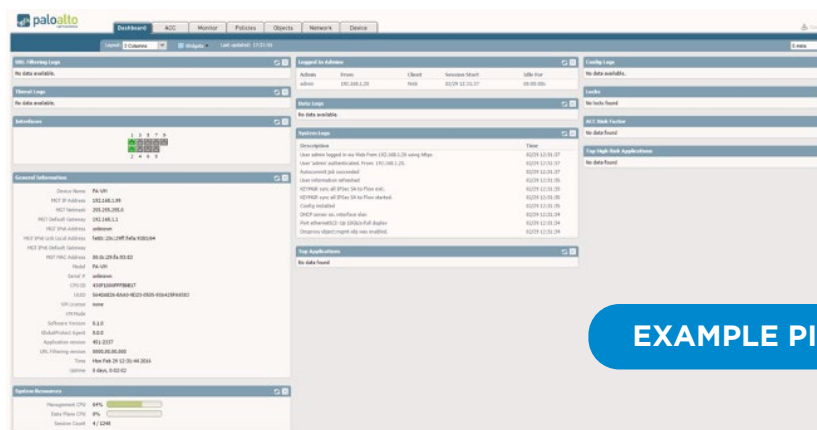
To view your managed CBAS appliance, you need to be on the internal network that the CBAS is protecting. In most cases, this will be referred to as the LAN side connection of the firewall.

- + In a web browser, we recommend Chrome, navigate to the URL bar, and enter the FQDN of your CBAS appliance. This will look similar to: **https://XXXXX.cs.ussignal.cloud** (XXXXXX is your unique order ID and is provided in the Notice of Order Completion).



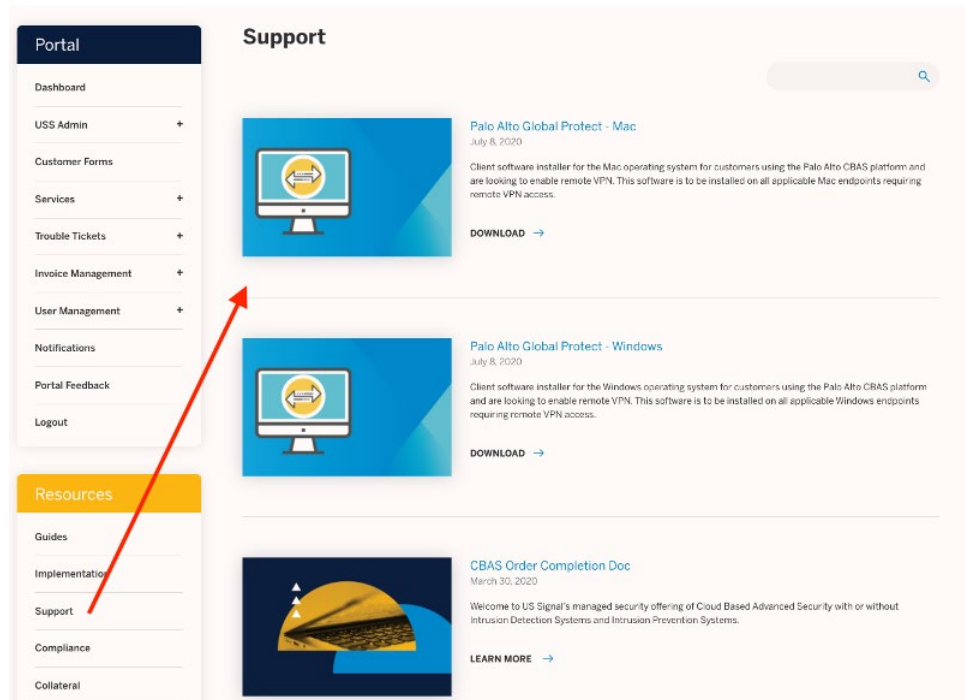
- + Enter the credentials provided to you. (This is provided in the Notice of Order Completion).

- + Upon successfully authenticating, you will be logged in and appear at the dashboard of the CBAS firewall. You can freely navigate to view settings and security policies. Any questions or requests can be directed to the US Signal TOC at 1-800-663-1700.

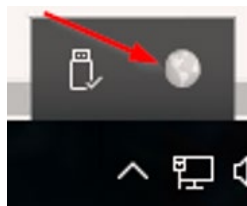


OBTAINING AND INSTALLING THE REMOTE VPN CLIENT SOFTWARE

The client software is found on the US Signal Customer Portal in the Resources – Support section. Visit <https://ussignal.com/portal> with an activated user account and search for 'Palo Alto' in the Support resources.



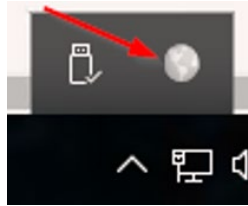
- + Select “Download” under the Windows or Mac installer based on your Operating System.
- + This will start the software download.
- + Once finished, run the executable. Optionally, for a mass deployment, choose a location in which to save the executable.
- + Click Next throughout the prompts to select default settings and click Close to complete the installation on your system. Once finished, in the icon tray, you will have a new, grayed out, globe icon. This is the Palo Alto Global Protect icon.



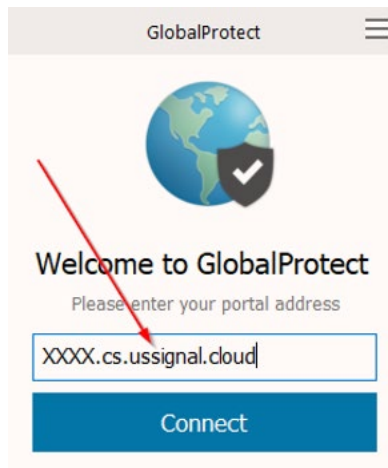
STARTING A REMOTE VPN CONNECTION

To connect, simply click on the Global Protect icon and sign in. If this is the first time connecting, follow the steps outlined below.

- + Open the icon tray and right click on the grayed out Global Protect icon.

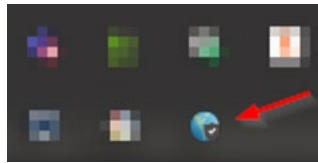


- + Enter the Fully Qualified Domain Name (FQDN) of the CBAS client VPN gateway powered by Palo Alto GlobalProtect. This will be saved after the first connection. This will look similar to: **https://XXXXX.cs.usignal.cloud** (XXXXXX is your unique order ID and is provided in the Notice of Order Completion).



- + Click "Connect."
- + Enter your credentials when prompted.
- + Click "Sign in."

- + This will say connected and then minimize into the icon tray once again.
- + You can confirm you are connected by hovering over the Global Protect icon in the tray. It will show a checkmark and say connected if you are connected.



- + There may be, upon connecting, an information popup that offers a newer version or older version of Global Protect. Clicking yes, will bring you into alignment with the version of Global Protect that your US Signal firewall is running, but it is not required to do so to have Global Protect function.

Please contact the US Signal TOC 24x7 if there are any questions or issues turning up US Signal CBAS client VPN gateway powered by Palo Alto GlobalProtect offering at 1-888-663-1700 or TOC@ussignal.com or through your customer portal at **www.ussignal.com/portal**.